

VISCE[®]

Back Office Facility

Serious about ANPR. Serious about service.™

Intelligence and Communications ANPR Back Office

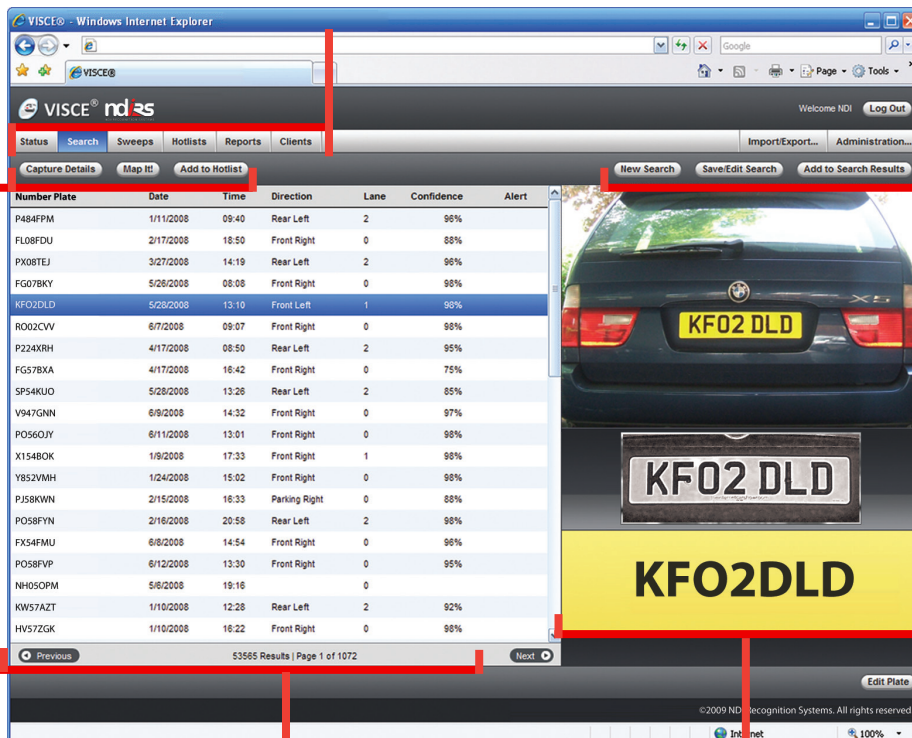
The VISCE Intelligence Server & Communications Engine is a fully functional intuitive ANPR Back Office facility designed to provide three fundamental roles.

The first role is to provide a backbone communications platform to collect ANPR hotlists from local, national or bespoke sources and provide the formatting for synchronised dissemination of those hotlist databases to remotely deployed ANPR assets. VISCE BOF can deal with 'standard hotlists' up to 50,000 vehicles and 'bulkload' hotlists (more than 50,000 vehicles). These include common databases such as PNC, MIDAS, DVLA no tax and DVLA no keeper for example. New additions to the hotlist entries can be simply synchronised and 'pushed' to the existing ANPR hotlists removing the need to completely reload large databases. The ANPR database is simply alerted to the fact that new hotlist additions or deletions have been added.

Here's what VISCE can do:

Check the status of your force intelligence, search for captured vehicles, search within time-specified sweeps, view stats in reports, communicate with connected clients, add or edit hotlists, and administer the system all from one interface.

View details about the selected capture, quickly edit the plate in case of a misread, view the selected captures(s) on a map, or add it to a hotlist for future alerts.



Edit the search that produced the existing results or create a new search, launch these search results in a new window to compare multiple searches, or save the search parameters to search again later.

View at a glance and sort by when the plate was captured, which lane it was in, what camera got it, how confident the recognition engine was about the accuracy, and whether there was an alert.

The layout lets you easily scan vertically, comparing the vehicle photo, the infrared plate photo, and the recognized plate number.

NDI Recognition Systems UK

Kidwells Park House, Kidwells Park Drive
Maidenhead, Berkshire SL6 8AQ, UK

Tel: +44(0) 1628 513480 Fax: +44(0) 1628 513481

Web: www.ndi-rs.com Email: sales@ndi-rs.com



NDI Recognition Systems US

725 West S.R. 434 Suite E
Longwood, FL 32750

Tel: 321-441-1800 Fax: 321-441-1801

Web: www.ndi-rs.net Email: sales@ndi-rs.net

Intelligence and Communications ANPR Back Office

The second role is the conversion of ANPR capture data and images into an intelligence database, and provide tools to query the intelligence database. The intelligence database is designed to be of strategic importance as a tool to assist in the detection of crimes and crime trends sometimes long after they have occurred.

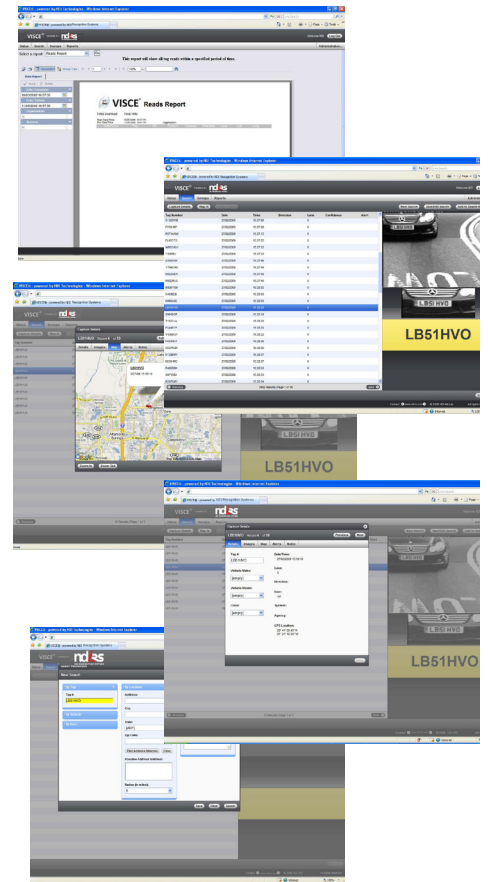
The third role is the ability to report accurately and concisely the resultant ANPR data in a user friendly way that can be easily interpreted by all and produce statistical reports to evidence such trends.

VISCE BOF uses an industry standard Microsoft SQL database and is an ideal choice for the management of fixed site, mobile and portable ANPR assets.

The VISCE BOF has an easy to use graphical user interface (GUI) and customers can be trained in a single day on its functionality. The layout lets you easily scan vertically and horizontally comparing the vehicle overview picture, the plate patch image and the recognised number plate read. Very simply users can glance and sort by when the plate was captured, at which location, which lane it was in, which camera recognised it, how confident the recognition engine was about the accuracy of the capture, and whether there was a hotlist alert attached to it.

Each user can be assigned their own secure log-in and password and VISCE can manage their account for complete auditing purposes.

VISCE can be accessed across a network or can be web enabled for the remote log-in from another PC anywhere in the world with access to the internet.



VISCE GATE

In addition to storing, matching and reporting on millions of vehicle reads everyday, VISCE BOF has an application program called VISCE GATE which facilitates the sending of ANPR data and images to the UK Police Service Back Office (BOF) via accredited web services. This additional application gives commercial users the ability to easily supply data to the Police Service to prevent and detect crime and for criminal intelligence purposes.

VISCE BOF is an exceptional Back Office application for the Law Enforcement, Local Authority and Commercial market to store, retrieve and analyse their ANPR data.

VISCE BOF can be integrated with any mainstream ANPR engine and results will be presented in a standard format.

Further information can be obtained from the NDI-RS sales team.

Due to a policy of continued product development, NDI Recognition Systems Ltd reserves the right to alter or amend any published specifications without notice.

NDI Recognition Systems UK

Kidwells Park House, Kidwells Park Drive
Maidenhead, Berkshire SL6 8AQ, UK

Tel: +44(0) 1628 513480 Fax: +44(0) 1628 513481

Web: www.ndi-rs.com Email: sales@ndi-rs.com



NDI Recognition Systems US

725 West S.R. 434 Suite E
Longwood, FL 32750

Tel: 321-441-1800 Fax: 321-441-1801

Web: www.ndi-rs.net Email: sales@ndi-rs.net