



**Serious about ANPR. Serious about service.™**

Automatic Number Plate Recognition (ANPR) is a proven technology that automatically reads licence plates using advanced camera, recognition and database technology. ANPR systems capture images of vehicle licence plates and instantly check those numbers against a variety of "hotlists" held in target vehicle databases.

## How Does it Work?

### 1 Camera Targets and Captures Plate

High-powered plate capture cameras send a crisp image to the ANPR processor, which translates the image into characters and checks against various hotlists.

### 2 Plate is Compared to Hotlist Database

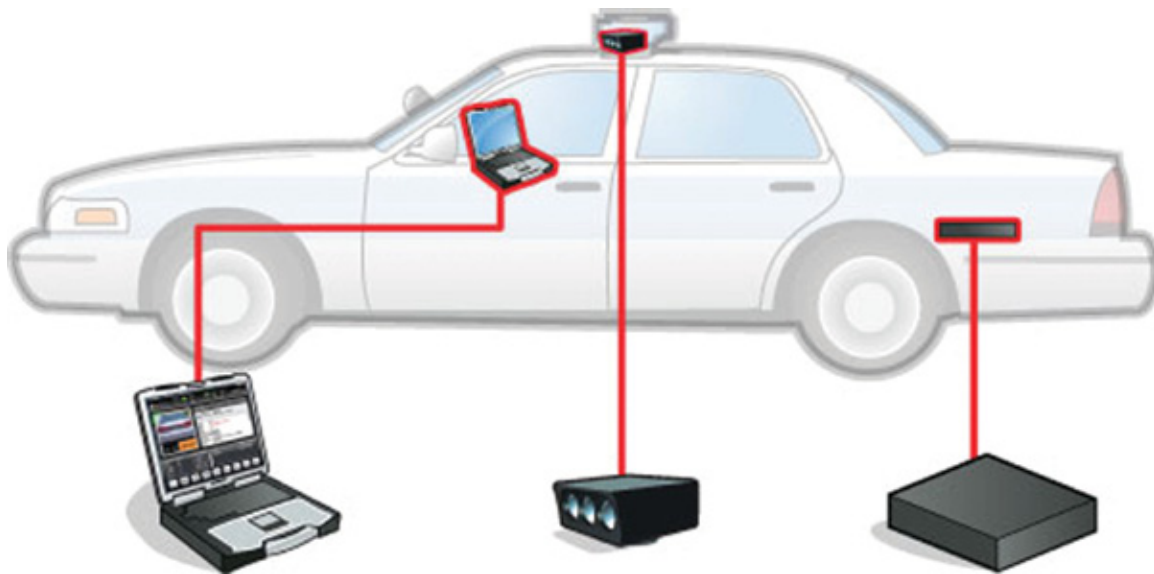
The ANPR processor stores hotlists. VeriPlate compares the captured plate against these lists.

### 3 Driver is Alerted of a Hotlist Match

When a match occurs, an audible and visual alert box appears on the laptop, showing details of the alert.

## VeriPlate Mobile In-Vehicle System

Permanently installed on a vehicle, this rugged configuration ensures fast operation and lasting performance.



**VeriPlate Application**  
(loaded on an existing laptop or MDT)

Allows the driver to view alerts, add to local databases and more.

**Plate Capture Cameras**

Day or night, these powerful infrared-equipped cameras deliver a high-contrast image to the ANPR processor for recognition.

**ANPR Processor**

Translates the plate image, compares it against the hotlists and connects to the VISCE server for advanced functionality.

## NDI Recognition Systems UK

Kidwells Park House, Kidwells Park Drive  
Maidenhead, Berkshire SL6 8AQ, UK

Tel: +44(0) 1628 513480 Fax: +44(0) 1628 513481

Web: [www.ndi-rs.com](http://www.ndi-rs.com) Email: [sales@ndi-rs.com](mailto:sales@ndi-rs.com)



## NDI Recognition Systems US

385 Commerce Way  
Longwood, FL 32750

Tel: 321-441-1800 Fax: 321-441-1801

Web: [www.ndi-rs.net](http://www.ndi-rs.net) Email: [sales@ndi-rs.net](mailto:sales@ndi-rs.net)

## The Big Picture

The strategic advantage of ANPR is the ability to derive intelligence from historical data. Investigators use data analysis to solve crimes simply and effectively. Mobile and static ANPR cameras are data collection points which are consolidated into the intelligence database repository, and can be stored for a matter of months to several years.

### Police National Computer



Data extract taken from the the Police National Computer (PNC) bulk data.

### Generic Hotlists



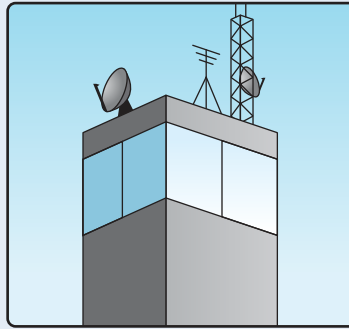
Data extract such as known drug dealers, gang members, sexual predators, etc.

### Local Hotlists



Local data extract.

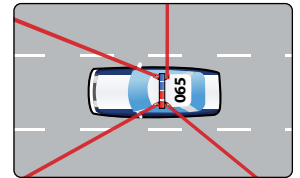
### VeriPlate VISCE



The purpose of VeriPlate Intelligence Server and Communications Engine (VISCE) is twofold.

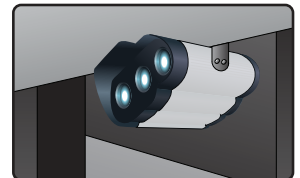
1. It acts as a gateway for communications between the sources of the data extracts and the mobile ANPR vehicles.
2. It provides a repository of collected plates which are uploaded after each shift, and forms the basis of an "after-the-fact" intelligence database.

### ANPR-Equipped Vehicles



Covert and marked vehicles can support up to four camera pods for optimum plate capture.

### Static Cameras



Cameras mounted on bridges, poles or lamp posts to capture images.

### Portable Systems



Rapid deployment for roadside monitoring on a short-term temporary basis. (also see Road Warrior).

## Intelligence Integration

An objective is to provide the right information to the right locations, as required. A range of VISCE configurations are available. Local and remote query access and linking with other VISCE servers is possible, where shared access to information can provide that added link to intelligence to tackle nationwide criminal activity.

*Due to a policy of continued product development, NDI Recognition Systems Ltd reserves the right to alter or amend any published specifications without notice.*

### NDI Recognition Systems UK

Kidwells Park House, Kidwells Park Drive  
Maidenhead, Berkshire SL6 8AQ, UK

Tel: +44(0) 1628 513480 Fax: +44(0) 1628 513481

Web: [www.ndi-rs.com](http://www.ndi-rs.com) Email: [sales@ndi-rs.com](mailto:sales@ndi-rs.com)



### NDI Recognition Systems US

385 Commerce Way  
Longwood, FL 32750

Tel: 321-441-1800 Fax: 321-441-1801

Web: [www.ndi-rs.net](http://www.ndi-rs.net) Email: [sales@ndi-rs.net](mailto:sales@ndi-rs.net)