

V220

Mobile ANPR Camera

Serious about ANPR. Serious about service.™



A high performance ANPR camera for day/night vehicle based applications

The V220 is a compact mobile ANPR camera designed primarily for vehicle based ANPR operations. The camera can be installed on top of a Police patrol vehicle or other surveillance vehicle or it can be discreetly mounted inside for covert applications.

Due to its modular design the V220 ANPR camera can also be used for short range fixed site or portable ANPR, eg: access control, car park management, roadside vehicle monitoring.

The V220 camera uses two high performance 10x optical zoom modules with a day / night function for extra high quality overview imaging, even in poor lighting conditions and a dedicated infrared camera for high quality number plate capture. The camera utilises a Super HAD CCD II sensor for extremely high sensitivity providing the best results in all weather and lighting conditions.

The V220 has been designed in-house by our own camera executives and can be utilised for multiple applications such as Law Enforcement, Civil Enforcement, Commercial sector, Access control, and /or Car Park management applications. When combined with the world's leading neural network ANPR engine called TALON, and its mobile equivalent SpeedPlate and VeriPlate, the NDI-RS solution will deliver the highest recognition speed and accuracy results for the fixed and mobile ANPR market 24 hours a day, 7 days a week.

Zoom Capability and wide angle of view. One of the unique functions of the NDI-RS V220 camera is the powerful and versatile zoom capability. The 10x optical zoom camera modules in the V220 give the user great flexibility to adapt a camera for their specific site requirements; mobile, in-vehicle, fixed operations. No more relensing or guess work – just a simple and intuitive user interface which can be loaded onto any standard PC. With zoomable colour and monochrome camera modules the V220 ANPR camera can easily achieve a 15 metre capture distance. Any requirement beyond 15 metres then please use the high performance C-3 camera from our product range.

Day / Night function. A principal feature of the V220 ANPR camera is the day/night function. The high performance colour camera module with the latest Super HAD CCD II sensor has the ability to switch over to night mode in poor light and at night time. The day / night camera module provides optimal sensitivity for both day and night time ANPR operations resulting in a significant improvement in the image quality under limited lighting conditions. In low light conditions the infrared filter is automatically removed for increased sensitivity enabling the colour module to operate in Black and White mode as low as 0.01lx. The monochrome ANPR camera module incorporates a band pass filter which eliminates the unwanted infrared encountered in very bright sunlight and from the glare of oncoming vehicle headlights.

The NDI-RS V220 mobile ANPR camera provides a very formidable solution for ANPR operations round the clock.

Key Features

- » Infrared "monochrome" ANPR camera
- » Day/Night colour camera for overview imaging
- » Powerful zoom capability
- » Compact and lightweight design
- » Sequential shuttering for extended dynamic range
- » User friendly controls and set-up

Applications

- » Mobile ANPR (covert and overt)
- » Fixed site ANPR
- » Access Control
- » Civil Enforcement
- » Car Park Management
- » Road Tolling
- » Journey Time Analysis

NDI Recognition Systems UK

Kidwells Park House, Kidwells Park Drive
Maidenhead, Berkshire SL6 8AQ, UK
Tel: +44(0) 1628 513480 Fax: +44(0) 1628 513481
Web: www.ndi-rs.com Email: sales@ndi-rs.com



NDI Recognition Systems US

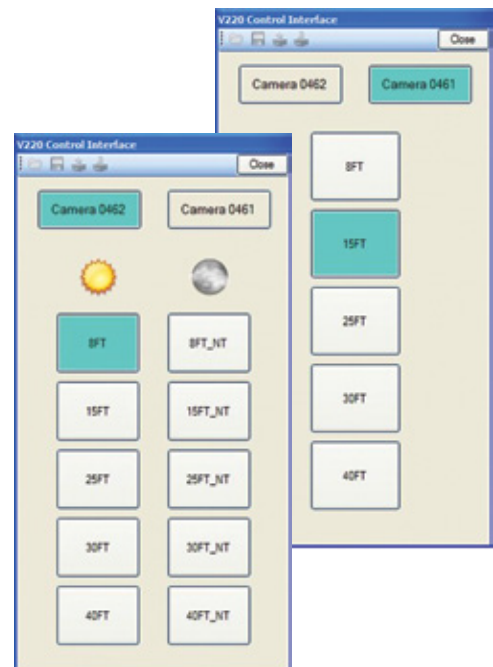
385 Commerce Way
Longwood, FL 32750
Tel: 321-441-1800 Fax: 321-441-1801
Web: www.ndi-rs.net Email: sales@ndi-rs.net

Camera Specifications

- Dual Configuration:** Single illuminator
Single monochrome ANPR camera
Single colour camera for overview imaging
- Single Configuration:** Single illuminator
Single monochrome ANPR camera
- Options:** Illuminator wavelength: 810nm (most visible), 870nm (barely visible), 940nm (invisible)
- Image Sensor:** 1/3 Type SUPER HAD CCD II
- Horizontal Resolution:** PAL: 530 TV lines (WIDE end)
- Lens:** 10 x Zoom
F= 5.1mm (WIDE) to 51 mm (TELE), F1.8 to F2.1
Variable zoom speed
- Angle of View (H):** 52° (wide end) to 5.4° (tele end)
- Sync System:** Internal
- S/N Ratio:** 50 dB
- Back Light Compensation:** ON/OFF
- Electronic Shutter Speed:** 1/50, to 1/10000 (1/1000 to 1/10000 for IR camera)
- Gain:** Auto/Manual (-3 to 28 dB. 2dB steps)
- Aperture Control:** 16 steps (F1.8 to F22)
- Preset:** 6 positions
- Video Output:** VBS: 1.0 Vp-p (sync negative)
- IR Illuminator Options:** 810nm, 870nm, 940nm
- Communications:** Bi directional RS 232 communications. Allows settings to be downloaded to the camera, and uploaded to the computer.
- Cable:** RS232, power and video
- Operating Voltage:** 9 to 15 V (DC Only)
- Power Consumption:** 8 W (typical)
- Dimensions:** Camera: H-59.4mm X W-145mm X D-129mm
- Weight:** 1.450 KG
- Environmental:** Sealing: IP68
- Storage Temperature/Humidity:** -20° to +60°C
- Operating Temperature/Humidity:** 0° to +50°C
- Accreditations and Approvals:** NPIA Spec 5, FCC, CE



NPIA AES Spec 5
Approved



Due to a policy of continued product development, NDI Recognition Systems Ltd reserves the right to alter or amend any published specifications without notice.

NDI Recognition Systems UK

Kidwells Park House, Kidwells Park Drive
Maidenhead, Berkshire SL6 8AQ, UK
Tel: +44(0) 1628 513480 Fax: +44(0) 1628 513481
Web: www.ndi-rs.com Email: sales@ndi-rs.com



NDI Recognition Systems US

385 Commerce Way
Longwood, FL 32750
Tel: 321-441-1800 Fax: 321-441-1801
Web: www.ndi-rs.net Email: sales@ndi-rs.net